

Activity Name	Original Duration	Planned Start	Planned Finish	2011				2012				2013				2014				2015				2016	
				Q3	Q4	Q1	Q2	Q3	Q4	Q1	Q2	Q3	Q4	Q1	Q2	Q3	Q4	Q1	Q2	Q3	Q4	Q1	Q2		
HY/2009/15 - CWB TUNNEL (CBTS SECTION)																									
SUBMISSIONS COMPLYING WITH EPs																									
EM&A Manual (rely on the Master EP's submission EP-364/2009/A Condition 2.9)																									
Baseline Monitoring Report (rely on the Master EP's submission EP-364/2009 Condition 3.3)																									
Monthly EM&A (rely on the masters EP's Submission, EP-364/2009/A Condition 3.4)																									
A dedicated website (rely on the master EP's submission, EP-364/2009/A Condition 4.2)																									
Management organization of main construction companies (FEP Condition 2.6)	1d	02-Oct-10	02-Oct-10																						
Work Schedule (FEP Condition 2.7)	1d	27-Oct-10	27-Oct-10																						
Location Plan (FEP Condition 2.8)	1d	27-Oct-10	27-Oct-10																						
Noise Management plan (FEP Condition 2.9)	1d	27-Oct-10	27-Oct-10																						
Landscape plan (FEP condition 2.10)	1d	31-Jan-11	31-Jan-11																						
EAST VENTILATION ADIT																									
CCT @ Portion 1, 2, 4, 6, 22	1315d	27-Sep-10	03-May-14																						
EV Adit @ Portion 4-Advance Works	526d	27-Sep-10	05-Mar-12																						
EV Adit Portion 1, 2, 6, 22	26d	22-Dec-11	16-Jan-12																						
EV Adit-based on Conforming Design	323d	15-Feb-12	02-Jan-13																						
TCBR1E (TS1 Area)																									
Diaphragm Wall Construction (incl. SI, & tests after completion)	107d	26-Apr-11	10-Aug-11																						
Excavation & Lateral Support, ELS	99d	16-Jul-11	22-Oct-11																						
Cut & Cover Tunnel Construction (incl. backfill)	78d	22-Oct-11	07-Jan-12																						
OHVD and Cable Trough (access from Portion 22)	76d	18-Dec-13	03-Mar-14																						
TCBR2 + TCBR3 (TS2 Area)																									
Diaphragm Wall Construction	118d	06-Jul-12	31-Oct-12																						
Excavation & Lateral Support, ELS	248d	06-Jul-12	10-Mar-13																						
Cut & Cover Tunnel Construction	164d	11-Mar-13	21-Aug-13																						
OHVD Cable Trough (Access from Portion 22)	150d	05-Aug-13	01-Jan-14																						
TCBR1W (TS4 Area)																									
Diaphragm Wall Construction	148d	28-Jun-11	22-Nov-11																						
Excavation & Lateral Support, ELS	319d	26-Jun-11	11-May-12																						
Landing Steps - Demolition/Reconstruct as footpath	40d	28-Jun-11	23-Aug-11																						

- ◆ Milestone
- ◆ Milestone
- ▬ Remaining Work
- ▬ Critical Remaining Work
- ▬ Actual Work

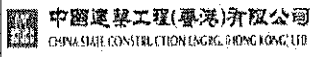
1 of 2

China State Construction Engineering (Hong Kong) Ltd.

Contract No. HY/2009/15 - Central Wan Chai By Pass - Tunnel

(CBTS Section)

Prepared by William Caluza			
Date	Revision	Checked	Approved
14-Mar-11	Revision C	ST	KL
	File: GC01a		
	(Layout:HY/2009/15: CWB - Summary)		



Activity Name	Original Duration	Planned Start	Planned Finish	2011					2012				2013				2014				2015				2016	
				Q3	Q4	Q1	Q2	Q3	Q4	Q1	Q2	Q3	Q4	Q1	Q2	Q3	Q4	Q1	Q2	Q3	Q4	Q1	Q2	Q3	Q4	Q1
Rock Excavation	235d	25-Apr-12	15-Dec-12																							
ME4-Diaphragm Wall	114d	10-May-12	19-Oct-12																							
AS Logistics Area for Mined Tunneling Works	174d	01-Jun-12	07-Feb-13																							
ME4-ELS Works	212d	01-Jun-12	02-Apr-13																							
SCL Entrusted Works	291d	18-Jul-12	08-Sep-13																							
Cut & Cover Tunnel Construction (w/o TS4 +)	111d	17-Dec-12	06-Apr-13																							
ME4-RC Structure	146d	28-Jan-13	21-Aug-13																							
OHVD and Cable Trough (Access from TZ5/TPCWAE/TPCWAW)	180d	17-Jun-13	13-Dec-13																							
MINED TUNNEL																										
CHT Protection Works @ location A, B, C	342d	27-Sep-10	01-Feb-12																							
Tunnel works from West Portal (access from TPCWAE& TZ5)	418d	12-Mar-12	30-Oct-13																							
Tunnel Works from East Portal (Access from TS4 Area)	214d	30-Mar-12	01-Feb-13																							
Tunnel OHVD & Cable Trough	384d	02-Dec-13	22-May-15																							
TPCWAE																										
Drainage Diversion works along Hung Hing Road (Portion 19)	176d	15-Oct-10	24-Jun-11																							
Diaphragm Wall Construction	147d	20-May-11	13-Oct-11																							
Excavation & Lateral Support, ELS	421d	20-May-11	13-Jul-12																							
Rock Excavation	208d	12-Mar-12	03-Oct-12																							
AS Logistics Area for Mined Tunneling works	342d	12-May-12	18-Apr-13																							
Cut & Cover Tunnel Construction	130d	28-Jan-13	06-Jun-13																							
OHVD and Cable Trough (Access from TZ5/TPCWAW)	182d	18-Feb-15	18-Aug-15																							
TPCWAW & PORTION 11																										
Diaphragm Wall Construction + Portion 11	222d	25-Oct-13	03-Jun-14																							
Excavation & Lateral Support, ELS	478d	25-Oct-13	14-Feb-15																							
Cut & Cover Tunnel Construction	143d	30-Dec-14	21-May-15																							
OHVD and Cable Trough Installation (Access from Portion 11)	235d	22-May-15	11-Jan-16																							

- ◆ Milestone
- ◆ Milestone
- ▨ Remaining Work
- ▨ Critical Remaining Work
- ▨ Actual Work

2 of 2

China State Construction Engineering (Hong Kong) Ltd.
Contract No. HY/2009/15 - Central Wan Chai By Pass - Tunnel
(CBTS Section)

Prepared by William Caluza			
Date	Revision	Checked	Approved
14-Mar-11	Revision C	ST	KL
	File: 0001a		
	(Layout: HY/2009/15: CWB - Summary)		



HY/2009/18 Central - Wan Chai Bypass (Central Interchange)

TASK filter: HL



Activity Name	Start	Finish	Total Float	2011	2012	2013	2014	2015	2016	2017
CWB - Central Interchange										
HIGH LEVEL PROGRAMME										
DATE FOR COMMENCEMENT & COMPLETION										
Contract Commencement	21-Sep-10 A	03-Jan-11 A								
Contract Construction Completion		30-Jan-16	365							
Contract DLP and Establishment Works Completion		29-Jan-17	0							
PRELIMINARIES										
Preliminary Submissions / Approvals	21-Sep-10 A	03-Jan-11 A								
Commence Site Mobilisation	03-Jan-11 A									
Mobilise, Hoarding & Site Clearance	03-Jan-11 A	14-May-11 A								
PORTION IV WORKS										
CWB Tunnel CH1480 to CH1580										
Site Investigation	11-May-11 A	15-Sep-11	28							
Construct Guide Walls	27-Jun-11 A	30-Sep-11	20							
Construct D-Wall / Barrettes	26-Aug-11	19-Apr-12	20							
ELS Works	20-Apr-12	11-Oct-12	19							
Construct CWB Tunnel & Ventilation Building	12-Oct-12	21-Jun-13	19							
Works inside CWB Tunnel	22-Jun-13	24-Sep-13	18							
KD-8 Complete		13-Oct-13*	0							
CWB Tunnel CH1580 to CH1646										
Construction Diversion for Finance Street	05-Sep-11	22-Oct-11	42							
East End of Finance St. Closed		23-Oct-11	219							
Site Investigation	30-Jul-11 A	09-Dec-11	126							
Construct Guide Walls	30-Jul-11 A	04-Jan-12	97							
Construct D-Wall / Barrettes	19-Mar-12	30-Jul-12	18							
ELS Works	31-Jul-12	19-Dec-12	22							
Construct CWB Tunnel	20-Dec-12	16-Apr-13	20							
Works inside CWB Tunnel	10-Aug-13	13-Dec-13	161							
KD-7 Complete		23-May-14*	0							
CWB Tunnel CH1646 to CH1685										
Man Yiu St. Diverted (Possess Portion IIA, IIB)	01-Feb-12	01-Feb-12	52							
Site Clearance & Divert Existing Utilities	01-Feb-12	29-Mar-12	60							
Site Investigation	30-Mar-12	04-May-12	54							
Sheet Pile / Pipe Pile / Grouting	26-Mar-12	29-May-12	63							
Construct Guide Walls	05-May-12	02-Jun-12	55							
Construct Barrettes	04-Jun-12	04-Jul-12	52							
Temporary Works to Support C/W Pipes	30-May-12	25-Jun-12	61							
ELS Works	05-Jul-12	08-Dec-12	56							
Demolish & Reconstruct CWB Tunnel	07-Dec-12	08-Mar-13	59							
Works Inside CWB Tunnel	22-Jun-13	23-Oct-13	212							
Surface Works										
Backfill, U/G Services, Roadworks & Landscaping	25-Jan-13	11-Jan-14	295							
KD-6 Complete		03-Nov-14*	0							
PORTION III WORKS										
CWB Tunnel CH1685 to CH1704										
Access to CRIII Works Area	01-Sep-11		56							
Works Area within CRIII Preparation	01-Sep-11	31-Dec-11	61							
Site Investigation	01-Feb-12	13-Mar-12	374							
Construct Guide Walls	29-Feb-12	30-Mar-12	379							
Construct D-Wall / Barrettes (thru old seawall)	31-Mar-12	12-Sep-12	376							
Construct Man Yiu Street Temporary Diversion	24-Nov-11	31-Jan-12	52							
ELS Works	13-Sep-12	19-Dec-12	377							
Construct CWB Tunnel (excl. roof slab)	20-Dec-12	23-Mar-13	375							
Break into Existing CWB Tunnel	25-Mar-13	25-Apr-13	377							
Construct CWB Tunnel Roof Slab	09-Jul-13	19-Aug-13	304							
Works inside CWB Tunnel	20-Aug-13	05-Nov-13	269							
CWB Tunnel CH1704 to CH1825										
KD-4 Complete		01-Aug-14*	0							
Works inside CWB Tunnel	16-Oct-12	09-Oct-13	271							
CWB Tunnel CH1825 to CH2600										
Works inside CWB Tunnel	10-Apr-12	02-Sep-13	100							
KD-5 Complete		31-Jan-14*	0							
Surface Works										
Road P1 Roadworks & Landscaping	20-Aug-13	19-Mar-14	324							
Man Yiu St. Widening Roadworks & Landscaping	31-Jul-13	27-Nov-13	415							
KD-3 Complete		06-Feb-15*	0							
PORTION V WORKS										
Man Kwong St. WB Widening										
Mobilization, Set up, Utilities Diversion, Tree	03-Jan-11 A	03-Jun-11 A								
Construct Trough B Structure - Phase 1	20-May-11 A	04-Aug-12	587							
Construct Trough B Structure - Phase 2b	12-Oct-11	06-Sep-13	335							
Temporary Drainage Diversion	15-Jul-13	23-Oct-13	19							
Construct Trough B Structure - Phase 2a	24-Oct-13	26-Jul-14	33							
Construct Trough B Structure - West End Portion	21-Jul-14	15-Oct-14	19							
Portion VI Access Date	12-Nov-12		322							
Man Kwong St. WB Widening	12-Nov-12	05-Apr-13	320							
Construct Retaining Wall D	29-Jul-13	20-Dec-13	90							
Remaining Roadworks & Landscaping	18-Nov-13	15-Jul-14	111							
KD-9 Complete		03-Nov-14*	0							
PORTION VI WORKS										
Man Kwong St. WB Widening										
Portion VI Access Date	12-Nov-12		219							
Man Kwong St. WB Widening	12-Nov-12	05-Apr-13	209							
Retaining Walls F	15-Oct-14	02-Jun-15	95							
Retaining Walls G	12-Nov-12	12-Oct-13	693							
Bridge B	12-Nov-12	25-Aug-14	523							
Trough A	21-Dec-13	14-Oct-14	63							
Elevated Layby at Rumsey St. Flyover	23-Apr-14	29-Jul-15	185							
Bridge A	12-Nov-12	01-Aug-14	157							
Open Sfp Road D / Man Po St.		14-Oct-14	838							
Retaining Wall A & B	15-Oct-14	16-Jun-15	91							
Remaining U/G Services, Roadworks & Landscaping	07-Nov-14	14-Sep-15	82							
KD-10 Complete		30-Jan-16*	0							
KD-16 Complete		30-Jan-16*	0							
Landscaping Establishment (Last Area)	15-Sep-15	13-Sep-16	138							
KD-15 Complete		29-Jan-17	0							

Activity ID	Activity Name	Rem Dur	Start	Finish	2011												2012					
					November						December						January			February		
					24	31	07	14	21	28	05	12	19	26	02	09	16	23	30	06	13	
3MRP - Nov 2011 to Feb 2012																						
01 - CONTRACT DATES																						
01.1 - Conditions																						
0110-1100	PMI for Section 1 of the Works	0		01-Dec-11													◆ PMI for Section 1 of the Works					
01.2 - Possession of Site																						
0120-1600	Possession to Portion IA	0	10-Nov-11 A														◆ Possession to Portion IA					
0120-1700	Possession to Portion IB	0	10-Nov-11 A														◆ Possession to Portion IB					
0120-1800	Possession to Portion IC	0	10-Nov-11 A														◆ Possession to Portion IC					
0120-1900	Possession to Portion ID	0	10-Nov-11 A														◆ Possession to Portion ID					
0120-2000	Possession to Portion X	0	20-Nov-11*														◆ Possession to Portion X					
0120-2100	Possession to Portion III	0	31-Dec-11*														◆ Possession to Portion III					
0120-2200	Possession to Portion VA	0	31-Dec-11*														◆ Possession to Portion VA					
0120-2300	Possession to Portion VB	0	31-Dec-11*														◆ Possession to Portion VB					
0120-2400	Possession to Portion VC	0	31-Dec-11*														◆ Possession to Portion VC					
0120-2500	Possession to Portion VD	0	31-Dec-11*														◆ Possession to Portion VD					
01.5 - Period of Site Possession for each Portion																						
0150-1000	Site possession Period Portion VI	2038	20-Jan-11 A	18-Jun-17																		
0150-1100	Site Possession Period Portion VIIA	2038	04-Aug-11 A	18-Jun-17																		
0150-1200	Site Possession Period Portion VIIIB	822	04-Aug-11 A	18-Feb-14																		
0150-1300	Site Possession Period Portion VIIC	1201	04-Aug-11 A	04-Mar-15																		
0150-1400	Site Possession Period Portion VIID	822	04-Aug-11 A	18-Feb-14																		
0150-1500	Site Possession Period Portion XI	635	05-Oct-11 A	15-Aug-13																		
0150-1700	Site Possession Period Portion IB	822	10-Nov-11 A	18-Feb-14																		
0150-1900	Site Possession Period Portion ID	822	10-Nov-11 A	18-Feb-14																		
0150-2000	Site Possession Period Portion X	2038	20-Nov-11	18-Jun-17																		
0150-2100	Site Possession Period Portion III	1997	31-Dec-11	18-Jun-17																		
0150-2200	Site Possession Period Portion VA	1997	31-Dec-11	18-Jun-17																		
0150-2300	Site Possession Period Portion VB	942	31-Dec-11	29-Jul-14																		
0150-2400	Site Possession Period Portion VC	1997	31-Dec-11	18-Jun-17																		
0150-2500	Site Possession Period Portion VD	1314	31-Dec-11	05-Aug-15																		
02 - PRE-CONSTRUCTION WORKS																						
02.1 - Permit & Licence Application																						
0210-1300	Apply for XP from HyD	0	21-Mar-11 A	31-Oct-11 A													Apply for XP from HyD					
0210-1400	XP issued by HyD	0		31-Oct-11 A													◆ XP issued by HyD					
0210-1500	Dumping Permit from CEDD	0	10-Mar-11 A	19-Nov-11 A													Dumping Permit from CEDD					
02.2 - Contractor's Submission																						
0220-1190	Revise Temp. Drainage Management Plan	0	10-Aug-11 A	19-Nov-11 A													Revise Temp. Drainage Management Plan					
0220-1200	Temp. Drainage Management Plan - Approval from ER	14	10-Sep-11 A	03-Dec-11													Temp. Drainage Management Plan - Approval from ER					
0220-1250	Concrete Ready Mix/Design Mix - Concrete Plant Trials & Approval	15	04-Aug-11 A	04-Dec-11													Concrete Ready Mix/Design Mix - Concrete Plant Trials & Approval					
0220-1260	Drainage Pipes & Materials - Submission	14	15-Sep-11 A	03-Dec-11													Drainage Pipes & Materials - Submission					
0220-1270	Drainage Pipes & Materials - ER Review/Comment	14	04-Dec-11	17-Dec-11													Drainage Pipes & Materials - ER Review/Comment					
0220-1280	Drainage Pipes & Materials - Resubmission	7	18-Dec-11	24-Dec-11													Drainage Pipes & Materials - Resubmission					
0220-1290	Drainage Pipes & Materials - ER Approval	14	25-Dec-11	07-Jan-12													Drainage Pipes & Materials - ER Approval					
0220-1300	Drainage Pipes & Materials - Procurement & Delivery	14	01-Jan-12	14-Jan-12													Drainage Pipes & Materials - Procurement & Delivery					

- ▬ Remaining Level of Effort
- ▬ Actual Level of Effort
- ▬ Actual Work
- ▬ Remaining Work
- ▬ Critical Remaining Work
- ◆ Milestone

Contract HY/2009/19
Three Month Rolling Programme (21 NOV 2011 - 20 FEB 2012)

3MRP
 3MRP - Nov 2011 to Feb 2012
 Page 1 of 7

Activity ID	Activity Name	Rem Dur	Start	Finish	2011												2012											
					November				December				January				February											
					24	31	07	14	21	28	05	12	19	26	02	09	16	23	30	06	13							
0220-1320	D-Wall Construction Materials - ER Review/Comment	0	19-Aug-11 A	25-Oct-11 A	D-Wall Construction Materials - ER Review/Comment																							
0220-1330	D-Wall Construction Materials - Resubmission	0	04-Sep-11 A	14-Nov-11 A	D-Wall Construction Materials - Resubmission																							
0220-1340	D-Wall Construction Materials - ER Approval	0	12-Sep-11 A	19-Nov-11 A	D-Wall Construction Materials - ER Approval																							
0220-1350	D-Wall Construction Materials - Procurement & Delivery	9	15-Oct-11 A	28-Nov-11	D-Wall Construction Materials - Procurement & Delivery																							
0220-1450	Bored Piles/H-piles Materials - Procurement & Delivery	7	03-Sep-11 A	26-Nov-11	Bored Piles/H-piles Materials - Procurement & Delivery																							
0220-1460	Bridge Bearing - Submission	40	10-Oct-11 A	29-Dec-11	Bridge Bearing - Submission																							
0220-1470	Bridge Bearing - ER Review/Comment	2	30-Dec-11	31-Dec-11	Bridge Bearing - ER Review/Comment																							
0220-1480	Bridge Bearing - Resubmission	14	01-Jan-12	14-Jan-12	Bridge Bearing - Resubmission																							
0220-1490	Bridge Bearing - ER Approval	28	15-Jan-12	11-Feb-12	Bridge B																							
02.3 - Method Statement / Shop Drawings																												
0230-1120	MS Marine Piling - Resubmission (no height limit)	0	20-Jul-11 A	07-Nov-11 A	MS Marine Piling - Resubmission (no height limit)																							
0230-1130	MS Marine Piling - ER Approval (no height limit)	0	19-Oct-11 A	14-Nov-11 A	MS Marine Piling - ER Approval (no height limit)																							
0230-1131	MS Marine Piling - Submission (low headroom)	28	12-Jan-12	08-Feb-12	MS Marine P																							
0230-1132	MS Marine Piling - ER Review & Comment (low headroom)	28	09-Feb-12	07-Mar-12																								
0230-1240	MS Diaphragm Wall - Resubmission	0	06-Sep-11 A	26-Oct-11 A	MS Diaphragm Wall - Resubmission																							
0230-1250	MS Diaphragm Wall - ER Approval	0	27-Oct-11 A	14-Nov-11 A	MS Diaphragm Wall - ER Approval																							
0230-1260	MS Cut & Cover Tunnel - Submission	28	15-Jan-12	11-Feb-12	MS Cut																							
0230-1540	MS Precasting of Bridge Segment & Beam - Submission	60	14-Dec-11	11-Feb-12	MS Prec																							
0230-1640	MS Box Culvert T1 - Resubmission	0	06-Sep-11 A	14-Nov-11 A	MS Box Culvert T1 - Resubmission																							
0230-1650	MS Box Culvert T1 - ER Approval	0	23-Oct-11 A	19-Nov-11 A	MS Box Culvert T1 - ER Approval																							
02.4 - Contractor's Design and Build Items																												
0240-1010	Temp Bridge "TA" Design - Prep & Submit	120	16-Dec-11	13-Apr-12																								
0240-1090	Int. Noise Enclosure Design - Public Consultation	108	29-Jul-11 A	06-Mar-12																								
0240-1095	Int. Noise Enclosure Design - ACABAS/ER Consultation/Submission	90	26-Nov-11	23-Feb-12																								
0240-1120	Noise Barrier Design - Public Consultation	108	29-Jul-11 A	06-Mar-12																								
0240-1122	Noise Barrier Design - ACABAS/ER Consultation/Submission	90	26-Nov-11	23-Feb-12																								
0240-1360	Marine Bored Piling Platform Design - Resubmission (F3 to F8)	6	22-Aug-11 A	25-Nov-11	Marine Bored Piling Platform Design - Resubmission (F3 to F8)																							
0240-1370	Marine Bored Piling Platform Design - ER Approval (F3 to F8)	6	23-Sep-11 A	01-Dec-11	Marine Bored Piling Platform Design - ER Approval (F3 to F8)																							
0240-1371	Marine Bored Piling Platform Design (F9 to F14) - Submission	14	07-Nov-11 A	03-Dec-11	Marine Bored Piling Platform Design (F9 to F14) - Submission																							
0240-1372	Marine Bored Piling Platform Design (F9 to F14) - ER Review/Comment	14	04-Dec-11	17-Dec-11	Marine Bored Piling Platform Design (F9 to F14) - ER Review/Comment																							
0240-1373	Marine Bored Piling Platform Design (F9 to F14) - Resubmission	14	18-Dec-11	31-Dec-11	Marine Bored Piling Platform Design (F9 to F14) - Resubmission																							
0240-1374	Marine Bored Piling Platform Design (F9 to F14) - ER Approval	14	01-Jan-12	14-Jan-12	Marine Bored Piling Platform Design (F9 to F14)																							
02.5 - Bridge Segment/Beam Off-site Precasting																												
0250-1000	Propose, approve and set-up Factory for Pre-cast Unit	152	14-Dec-11	13-May-12																								
0250-1100	Geometric Design of the Bridge Segments/Beams	90	14-Dec-11	02-Mar-12																								
03 - PRELIMINARY WORKS																												
03.1 - Site Establishment																												
0310-1290	Fabrication of Special Hoarding	53	24-Oct-11 A	20-Jan-12	Fabrication of Special Hoarding																							
0310-1300	Hoarding at Portion VA & VB	40	20-Jan-12	10-Mar-12																								
0310-1700	Temporary Cul-de-sac at Watson Road	0	08-Aug-11 A	29-Oct-11 A	Temporary Cul-de-sac at Watson Road																							
03.2 - Geotechnical Instrumentation & Monitoring Works																												
0320-1050	Geotechnical Instrumentation Portion IB, ID	24	14-Nov-11 A	17-Dec-11	Geotechnical Instrumentation Portion IB, ID																							
0320-1100	Geotechnical Instrumentation Portion X	60	19-Dec-11	29-Feb-12																								
03.3 - Interface Works																												

Contract HY/2009/19

Three Month Rolling Programme (21 NOV 2011 - 20 FEB 2012)

3MRP

3MRP - Nov 2011 to Feb 2012

Page 2 of 7

Activity ID	Activity Name	Rem Dur	Start	Finish	2011												2012					
					November				December				January				February					
					24	31	07	14	21	28	05	12	19	26	02	09	16	23	30	06	13	
0330-1100	Works at FEHD Permanent Depot (Stage 1)	36	21-Nov-11	31-Dec-11	Works at FEHD Permanent Depot (Stage 1)																	
0330-1110	Submit to FEHD/ER Relocation Sequence & Programme	6	21-Nov-11	26-Nov-11	Submit to FEHD/ER Relocation Sequence & Programme																	
0330-1120	Relocate FEHD to Permanent Depot at Portions IA & X	12	02-Jan-12	14-Jan-12	Relocate FEHD to Permanent Depot at Portions																	
04 - SECTION 1 OF THE WORKS (Subject to Excision)																						
04.1 - Drainage & Sewerage																						
0410-0980	Ground investigation + CAR & RAP approval	12	19-Jul-11 A	03-Dec-11	Ground investigation + CAR & RAP approval																	
0410-0990	Engineer Instruction to excision of the works	0	03-Dec-11	03-Dec-11	◆ Engineer Instruction to excision of the works																	
0410-1010	Confirmatory Investigation/Sample/Tests/Decontamination	60	05-Dec-11	15-Feb-12	Co																	
0410-1020	Utility Coordination and Liaison	48	05-Dec-11	01-Feb-12	Utility Coordination and																	
05 - SECTION 2 & 2A OF THE WORKS																						
05.2 - Cut & Cover Tunnel Ch 4932-5149																						
05.2.1 - D-Wall Construction																						
0521-1662	Portion VII - Wheel Washing and Haul Road	0	03-Oct-11 A	29-Oct-11 A	Portion VII - Wheel Washing and Haul Road																	
0521-1663	Portion VII - D-wall Rebar Bending Yard	0	20-Oct-11 A	26-Oct-11 A	Portion VII - D-wall Rebar Bending Yard																	
0521-1674	D-wall Plant Set-up - Bentonite Silo (silo 13 to 26)	0	24-Oct-11 A	28-Oct-11 A	D-wall Plant Set-up - Bentonite Silo (silo 13 to 26)																	
0521-1679	D-wall Plant Set-up - Bentonite Mixing & Testing	0	29-Oct-11 A	17-Nov-11 A	D-wall Plant Set-up - Bentonite Mixing & Testing																	
0521-1690	D-wall N95-N106 Grouting for Existing Seawall Rubble Mound	0	03-Oct-11 A	24-Oct-11 A	D-wall N95-N106 Grouting for Existing Seawall Rubble Mound																	
0521-1700	D-wall N95-N106 Guide Wall	0	17-Sep-11 A	31-Oct-11 A	D-wall N95-N106 Guide Wall																	
0521-1710.05	D-wall Panel N106 (6m - 441cu.m)	12	10-Feb-12	23-Feb-12	D-wall Panel N106 (6m - 441cu.m)																	
0521-1710.10	D-wall Panel N105 (4.8m - 254cu.m)	10	20-Jan-12	03-Feb-12	D-wall Panel N105 (4.8m - 254cu.m)																	
0521-1710.15	D-wall Panel N104 (3.4m - 257cu.m)	9	23-Dec-11	02-Jan-12	D-wall Panel N104 (3.4m - 257cu.m)																	
0521-1710.20	D-wall Panel N103 (3.4m - 256cu.m)	9	09-Dec-11	19-Dec-11	D-wall Panel N103 (3.4m - 256cu.m)																	
0521-1710.25	D-wall Panel N102 (6m - 452cu.m)	12	17-Nov-11 A	03-Dec-11	D-wall Panel N102 (6m - 452cu.m)																	
0521-1710.30	D-wall Panel N101 (6m - 453cu.m)	12	06-Jan-12	19-Jan-12	D-wall Panel N101 (6m - 453cu.m)																	
0521-1710.35	D-wall Panel N100 (6m - 456cu.m)	12	02-Feb-12	15-Feb-12	D-wall Panel N100 (6m - 456cu.m)																	
0521-1710.40	D-wall Panel N99 (6m - 459cu.m)	12	16-Jan-12	01-Feb-12	D-wall Panel N99 (6m - 459cu.m)																	
0521-1710.45	D-wall Panel N98 (6m - 462cu.m)	12	26-Dec-11	10-Jan-12	D-wall Panel N98 (6m - 462cu.m)																	
0521-1710.50	D-wall Panel N97 (3.29m - 265cu.m)	7	14-Nov-11 A	28-Nov-11	D-wall Panel N97 (3.29m - 265cu.m)																	
0521-1710.55	D-wall Panel N96 (6m - 488cu.m)	12	05-Dec-11	17-Dec-11	D-wall Panel N96 (6m - 488cu.m)																	
0521-1710.60	D-wall Panel N95 (6m - 492cu.m)	12	16-Dec-11	31-Dec-11	D-wall Panel N95 (6m - 492cu.m)																	
0521-1740	D-wall N83-N84 Guide Wall	0	06-Oct-11 A	29-Oct-11 A	D-wall N83-N84 Guide Wall																	
0521-1750.05	D-wall Panel N94 (6m - 497cu.m)	12	02-Jan-12	14-Jan-12	D-wall Panel N94 (6m - 497cu.m)																	
0521-1750.10	D-wall Panel N93 (6m - 501cu.m)	12	11-Jan-12	27-Jan-12	D-wall Panel N93 (6m - 501cu.m)																	
0521-1750.15	D-wall Panel N92 (6m - 503cu.m)	12	28-Jan-12	10-Feb-12	D-wall Panel N92 (6m - 503cu.m)																	
0521-1750.20	D-wall Panel N91 (6m - 472cu.m)	12	14-Dec-11	27-Dec-11	D-wall Panel N91 (6m - 472cu.m)																	
0521-1750.25	D-wall Panel N90 (4.16m - 349cu.m)	12	28-Nov-11	10-Dec-11	D-wall Panel N90 (4.16m - 349cu.m)																	
0521-1750.30	D-wall Panel N89 (4.16m - 349cu.m)	9	03-Nov-11 A	30-Nov-11	D-wall Panel N89 (4.16m - 349cu.m)																	
0521-1750.35	D-wall Panel N88 (6m - 505cu.m)	12	08-Dec-11	21-Dec-11	D-wall Panel N88 (6m - 505cu.m)																	
0521-1750.40	D-wall Panel N87 (6m - 506cu.m)	12	22-Dec-11	04-Jan-12	D-wall Panel N87 (6m - 506cu.m)																	
0521-1750.45	D-wall Panel N86 (6m - 507cu.m)	12	01-Feb-12	14-Feb-12	D-wall Panel N86 (6m - 507cu.m)																	
0521-1750.50	D-wall Panel N85 (6m - 507cu.m)	12	19-Jan-12	04-Feb-12	D-wall Panel N85 (6m - 507cu.m)																	
0521-1750.55	D-wall Panel N84 (6m - 511cu.m)	12	05-Jan-12	18-Jan-12	D-wall Panel N84 (6m - 511cu.m)																	
0521-1750.60	D-wall Panel N83 (6m - 517cu.m)	12	27-Dec-11	09-Jan-12	D-wall Panel N83 (6m - 517cu.m)																	
0521-1780	D-wall N74-N82 Guide Wall	0	07-Oct-11 A	26-Oct-11 A	D-wall N74-N82 Guide Wall																	

Contract HY/2009/19

Three Month Rolling Programme (21 NOV 2011 - 20 FEB 2012)

3MRP

3MRP - Nov 2011 to Feb 2012

Page 3 of 7

■ Remaining Level of Effort
 ■ Actual Level of Effort
 ■ Actual Work
 ■ Remaining Work
 ■ Critical Remaining Work
 ◆ Milestone

Activity ID	Activity Name	Rem Dur	Start	Finish	2011												2012				
					November					December				January			February				
					24	31	07	14	21	28	05	12	19	26	02	09	16	23	30	06	13
0521-1790.10	D-wall Panel N74 (6m - 562cu.m)	12	06-Feb-12	18-Feb-12																	
0521-1790.15	D-wall Panel N75 (6m - 554cu.m)	12	14-Jan-12	31-Jan-12																	
0521-1790.20	D-wall Panel N76 (6m - 585cu.m)	12	31-Dec-11	13-Jan-12																	
0521-1795.10	D-wall Panel N77 (6m - 570cu.m)	12	01-Dec-11	14-Dec-11																	
0521-1795.15	D-wall Panel N78 (6m - 554cu.m)	12	17-Dec-11	30-Dec-11																	
0521-1795.20	D-wall Panel N79 (6m - 545cu.m)	12	10-Jan-12	26-Jan-12																	
0521-1795.25	D-wall Panel N80 (6m - 537cu.m)	12	27-Jan-12	09-Feb-12																	
0521-1795.30	D-wall Panel N81 (6m - 530cu.m)	12	13-Dec-11	26-Dec-11																	
0521-1795.35	D-wall Panel N82 (6m - 524cu.m)	9	10-Nov-11 A	07-Dec-11																	
0521-1800	D-wall N59-N70 Pre-drilling (6 nos. remaining - 1 rig@6d/hole)	36	19-Sep-11 A	14-Jan-12																	
0521-1810	D-wall N59-N70 Grouting for Existing Seawall Rubble Mound	21	16-Jan-12	11-Feb-12																	
0521-1830.10	D-wall Panel N70 (6m - 621cu.m)	12	07-Feb-12	20-Feb-12																	
0521-1830.20	D-wall Panel N68 (3.95m - 409cu.m)	10	11-Feb-12	22-Feb-12																	
0521-1840	D-wall N52-N58 Pre-drilling (7 nos@3d - 2 rig)	21	16-Jan-12	11-Feb-12																	
0521-1950	Site Survey & Setting Out (Portion IA and IC)	0	10-Nov-11 A	14-Nov-11 A																	
0521-1990.10	Site Establishment - Haul Road / Access Road	6	15-Nov-11 A	26-Nov-11																	
0521-1990.20	Site Establishment - Additional Bentonite Plant	15	14-Dec-11	30-Dec-11																	
0521-1970	D-wall S102-S113 Pre-drilling (12 S55-S113/BC40-BC68 to share 9 rigs@5d/hole)	20	10-Nov-11 A	13-Dec-11																	
0521-1990	D-wall S102-S113 Guide Wall	15	14-Dec-11	30-Dec-11																	
0521-1990.10	D-wall Panel S113 (3.28m - 244cu.m)	10	27-Jan-12	07-Feb-12																	
0521-1990.20	D-wall Panel S111 (7.65m - 575cu.m)	12	31-Dec-11	13-Jan-12																	
0521-1990.25	D-wall Panel S110 (5.4m - 408cu.m)	10	31-Jan-12	10-Feb-12																	
0521-1990.35	D-wall Panel S108 (7.65m - 581cu.m)	12	07-Jan-12	20-Jan-12																	
0521-1990.40	D-wall Panel S107 (5.2m - 395cu.m)	10	04-Feb-12	15-Feb-12																	
0521-1990.50	D-wall Panel S105 (6m - 458cu.m)	12	14-Jan-12	31-Jan-12																	
0521-1990.55	D-wall Panel S104 (6m - 481cu.m)	12	09-Feb-12	22-Feb-12																	
0521-1990.65	D-wall Panel S102 (5.96m - 483 cu.m)	12	19-Jan-12	04-Feb-12																	
0521-2000	D-wall S90-S101 Pre-drilling (S55-S113/BC40-BC68 to share 9 rigs@5d/hole)	30	14-Nov-11 A	24-Dec-11																	
0521-2010	D-wall S90-S101 Guide Wall	15	26-Dec-11	11-Jan-12																	
0521-2030	D-wall S78-S89 Pre-drilling (S55-S113/BC40-BC68 to share 9 rigs@5d/hole)	30	10-Nov-11 A	24-Dec-11																	
0521-2040	D-wall S81-S89 Guide Wall	15	26-Dec-11	11-Jan-12																	
0521-2050.10	D-wall Panel S81 (2.8m - 262cu.m)	9	28-Jan-12	07-Feb-12																	
0521-2050.15	D-wall Panel S82 (2.8m - 248cu.m)	9	12-Jan-12	21-Jan-12																	
0521-2050.20	D-wall Panel S83 (6m - 517cu.m)	12	01-Feb-12	14-Feb-12																	
0521-2050.25	D-wall Panel S84 (6m - 511cu.m)	12	18-Jan-12	09-Feb-12																	
0521-2055.10	D-wall Panel S85 (6m - 507cu.m)	12	06-Feb-12	18-Feb-12																	
0521-2055.20	D-wall Panel S87 (6m - 506cu.m)	12	10-Feb-12	23-Feb-12																	
0521-2060	D-wall S66-S77 Pre-drilling (S55-S113/BC40-BC68 to share 9 rigs @5d/hole)	25	15-Dec-11	12-Jan-12																	
0521-2070	D-wall S66-S77 Guide Wall	15	13-Jan-12	02-Feb-12																	
0521-2080	D-wall S60-S65 Pre-drilling (S55-S113/BC40-BC68 to share 9 rigs @5d/hole)	25	15-Dec-11	12-Jan-12																	
0521-2100	D-wall S60-S65 Guide Wall	15	13-Jan-12	02-Feb-12																	
0521-2120	D-wall S56-S59 Pre-drilling (S55-S113/BC40-BC68 to share 9 rigs @5d/hole)	25	15-Dec-11	12-Jan-12																	
0521-2130	D-wall S56-S59 Guide Wall	15	13-Jan-12	02-Feb-12																	
0521-2150	D-wall N52-NT06 G.L. Preliminary Report / Founding Level	37	28-Jan-12	10-Mar-12																	

Remaining Level of Effort
 Actual Level of Effort
 Actual Work
 Remaining Work
 Critical Remaining Work
 Milestone

Contract HY/2009/19
Three Month Rolling Programme (21 NOV 2011 - 20 FEB 2012)

Activity ID	Activity Name	Rem Dur	Start	Finish	2011														2012						
					November							December							January			February			
					24	31	07	14	21	28	05	12	19	26	03	10	17	24	31	07	14	21	28	06	13
0521-2155	D-wall S52-S113 G.I. Preliminary Report / Founding Level	30	27-Dec-11	02-Feb-12	D-wall S52-S113 G.I.																				
05.2.2 - Barrette Construction																									
0522-2180	Barrette BC53-BC56 Pre-drilling (S55-S113/BC40-BC68 to share 9 rigs @5d/hole)	18	05-Dec-11	24-Dec-11	Barrette BC53-BC56 Pre-drilling (S55-S113/BC40-BC68 to share 9 rigs @5d/hole)																				
0522-2190	Barrette BC54-BC56 Grouting for Existing Seawall Rubble Mound	12	26-Dec-11	07-Jan-12	Barrette BC54-BC56 Grouting for Existing Seawall Rubble Mound																				
0522-2200	Barrette BC54-BC56 Guide Wall	12	09-Jan-12	21-Jan-12	Barrette BC54-BC56 Guide Wall																				
0522-2210.10	Barrette Pile BC54	12	26-Jan-12	08-Feb-12	Barrette Pile BC54																				
0522-2210.15	Barrette Pile BC55	12	02-Feb-12	15-Feb-12	Barrette Pile BC55																				
0522-2210.20	Barrette Pile BC56	12	09-Feb-12	22-Feb-12	Barrette Pile BC56																				
0522-2220	Barrette BC57-BC68 Pre-drilling (S55-S113/BC40-BC68 to share 9 rigs @5d/hole)	30	14-Nov-11 A	24-Dec-11	Barrette BC57-BC68 Pre-drilling (S55-S113/BC40-BC68 to share 9 rigs @5d/hole)																				
0522-2230	Barrette BC57-BC68 Grouting for Existing Seawall Rubble Mound	30	26-Dec-11	01-Feb-12	Barrette BC57-BC68 Grouting for Existing Seawall Rubble Mound																				
0522-2240	Barrette BC57-BC68 Guide Wall	24	16-Jan-12	15-Feb-12	Barrette BC57-BC68 Guide Wall																				
0522-2270	Barrette BC43-BC52 Pre-drilling (S55-S113/BC40-BC68 to share 9 rigs @5d/hole)	25	15-Dec-11	12-Jan-12	Barrette BC43-BC52 Pre-drilling (S55-S113/BC40-BC68 to share 9 rigs @5d/hole)																				
0522-2280	Barrette BC43-BC52 Grouting for Existing Seawall Rubble Mound	12	05-Jan-12	18-Jan-12	Barrette BC43-BC52 Grouting for Existing Seawall Rubble Mound																				
0522-2290	Barrette BC43-BC52 Guide Wall	12	19-Jan-12	04-Feb-12	Barrette BC43-BC52 Guide Wall																				
0522-2320	Barrette BC40-BC42 Pre-drilling (S55-S113/BC40-BC68 to share 9 rigs @5d/hole)	25	15-Dec-11	12-Jan-12	Barrette BC40-BC42 Pre-drilling (S55-S113/BC40-BC68 to share 9 rigs @5d/hole)																				
0522-2330	Barrette BC40-BC42 Grouting for Existing Seawall Rubble Mound	18	13-Jan-12	06-Feb-12	Barrette BC40-BC42 Grouting for Existing Seawall Rubble Mound																				
0522-2340	Barrette BC40-BC42 Guide Wall	18	07-Feb-12	27-Feb-12	Barrette BC40-BC42 Guide Wall																				
0522-2360	Bulkhead BW1-BW7 Pre-drilling (S55-S113/BC40-BC68 to share 9 rigs @5d/hole)	25	15-Dec-11	12-Jan-12	Bulkhead BW1-BW7 Pre-drilling (S55-S113/BC40-BC68 to share 9 rigs @5d/hole)																				
0522-2370	Bulkhead BW1-BW7 Grouting for Existing Seawall Rubble Mound	18	13-Jan-12	06-Feb-12	Bulkhead BW1-BW7 Grouting for Existing Seawall Rubble Mound																				
0522-2380	Bulkhead BW1-BW7 Guide Wall	12	07-Feb-12	20-Feb-12	Bulkhead BW1-BW7 Guide Wall																				
0522-2392	Barrette BC40-BC68 & BW1-7 G.I. Prelim Report / Founding Lev	48	26-Dec-11	22-Feb-12	Barrette BC40-BC68 & BW1-7 G.I. Prelim Report / Founding Lev																				
05.2.3 - ELS																									
0523-2398	Prepare & Submit Documents as per ETWB TCW No. 15/2005	30	21-Nov-11	24-Dec-11	Prepare & Submit Documents as per ETWB TCW No. 15/2005																				
05.3 - Box Culvert T1																									
0530-2940	Watson Road TTM Stage 1	0	20-Oct-11 A	02-Nov-11 A	Watson Road TTM Stage 1																				
0530-2970	Utility Detection & Protection	0	20-Oct-11 A	09-Nov-11 A	Utility Detection & Protection																				
0530-2980	Bay 4-5 Site Clearance/Formation	0	03-Nov-11 A	09-Nov-11 A	Bay 4-5 Site Clearance/Formation																				
0530-2990	Bay 4-5 Trench excavation	21	14-Nov-11 A	14-Dec-11	Bay 4-5 Trench excavation																				
0530-3000	Bay 4-5 Box Culvert Construction	42	15-Dec-11	04-Feb-12	Bay 4-5 Box Culvert Construction																				
0530-3010	Bay 4-5 Road Reinstatement	7	06-Feb-12	13-Feb-12	Bay 4-5 Road Reinstatement																				
0530-3015	Watson Road TTM Stage 2 - TMLG Approval/Endorsement	15	05-Aug-11 A	07-Dec-11	Watson Road TTM Stage 2 - TMLG Approval/Endorsement																				
0530-3020	Implement Watson Road TTM Stage 2	3	16-Jan-12	18-Jan-12	Implement Watson Road TTM Stage 2																				
0530-3030	Bay 1-3 Site Clearance/Formation	3	19-Jan-12	21-Jan-12	Bay 1-3 Site Clearance/Formation																				
0530-3040	Bay 1-3 Trench excavation	36	26-Jan-12	07-Mar-12	Bay 1-3 Trench excavation																				
0530-3111	Bay 9 - Sheet Piling Works	12	15-Oct-11 A	24-Dec-11	Bay 9 - Sheet Piling Works																				
0530-3113	Bay 9 - Excavation	12	14-Jan-12	31-Jan-12	Bay 9 - Excavation																				
0530-3114	Bay 9 - Box Culvert/Outfall Construction	48	01-Feb-12	27-Mar-12	Bay 9 - Box Culvert/Outfall Construction																				
0530-3200	Storm Drainage 1500 Dia. Within Portion X (FEHD)	60	16-Jan-12	28-Mar-12	Storm Drainage 1500 Dia. Within Portion X (FEHD)																				
10 - SECTION X OF THE WORKS																									
10.1 - E/B Bridges (Bridge D, E and F)																									
10.1.1 - Marine Pier Construction																									
Pier F03 to F15																									
1011-1420	Extract Existing Dolphin Front Pile pier F9	9	26-Dec-11*	04-Jan-12	Extract Existing Dolphin Front Pile pier F9																				
1011-1425	Remove Existing Dolphin pier F9	9	05-Jan-12	14-Jan-12	Remove Existing Dolphin pier F9																				

- ▬ Remaining Level of Effort
- ▬ Actual Level of Effort
- ▬ Actual Work
- ▬ Remaining Work
- ▬ Critical Remaining Work
- ◆ Milestone

Contract HY/2009/19
Three Month Rolling Programme (21 NOV 2011 - 20 FEB 2012)

3MRP
 3MRP - Nov 2011 to Feb 2012
 Page 5 of 7

Activity ID	Activity Name	Rem Dur	Start	Finish	2011												2012											
					November						December						January						February					
					24	31	07	14	21	28	05	12	19	26	02	09	16	23	30	06	13							
1011-1430	Extract Existing Dolphin Front Pile pier F10	9	16-Jan-12	28-Jan-12																								
1011-1435	Remove Existing Dolphin pier F10	9	30-Jan-12	08-Feb-12																								
1011-1530.10	F3 piling platform - temporary piles (remaining 4 nos.)	0	18-Oct-11 A	26-Oct-11 A	F3 piling platform - temporary piles (remaining 4 nos.)																							
1011-1530.20	F3 piling platform - erect steel platform (remaining 3 modules)	0	22-Oct-11 A	19-Nov-11 A	F3 piling platform - erect steel platform (remaining 3 modules)																							
1011-1530.30	F3 piling platform - ICE	2	03-Nov-11 A	22-Nov-11	F3 piling platform - ICE																							
1011-1540.20	F4 piling platform - temporary piles (remaining 2 nos.)	0	27-Oct-11 A	28-Oct-11 A	F4 piling platform - temporary piles (remaining 2 nos.)																							
1011-1540.30	F4 piling platform - erect steel platform (remaining 3 modules)	0	21-Oct-11 A	10-Nov-11 A	F4 piling platform - erect steel platform (remaining 3 modules)																							
1011-1540.40	F4 piling platform - ICE	0	04-Nov-11 A	12-Nov-11 A	F4 piling platform - ICE																							
1011-1550.10	F5 piling platform - temporary piles 1 to 4	2	17-Oct-11 A	22-Nov-11	F5 piling platform - temporary piles 1 to 4																							
1011-1550.20	F5 piling platform - erect steel platform modules 1 & 2	6	22-Nov-11	29-Nov-11	F5 piling platform - erect steel platform modules 1 & 2																							
1011-1550.30	F5 piling platform - temporary piles 5 & 6	6	29-Nov-11	06-Dec-11	F5 piling platform - temporary piles 5 & 6																							
1011-1550.40	F5 piling platform - erect steel platform modules 3 & 4	6	06-Dec-11	13-Dec-11	F5 piling platform - erect steel platform modules 3 & 4																							
1011-1550.50	F5 piling platform - ICE	3	13-Dec-11	16-Dec-11	F5 piling platform - ICE																							
1011-1560.10	F6 piling platform - temporary piles 3 & 4	0	01-Nov-11 A	19-Nov-11 A	F6 piling platform - temporary piles 3 & 4																							
1011-1560.20	F6 piling platform - erect steel platform modules 1 & 2	6	24-Nov-11	01-Dec-11	F6 piling platform - erect steel platform modules 1 & 2																							
1011-1560.30	F6 piling platform - temporary piles 5 & 6	6	01-Dec-11	08-Dec-11	F6 piling platform - temporary piles 5 & 6																							
1011-1560.40	F6 piling platform - erect steel platform modules 3 & 4	6	08-Dec-11	15-Dec-11	F6 piling platform - erect steel platform modules 3 & 4																							
1011-1560.50	F6 piling platform - ICE	6	15-Dec-11	22-Dec-11	F6 piling platform - ICE																							
1011-1570.10	F7 piling platform - temporary piles 1 to 4	2	15-Oct-11 A	23-Nov-11	F7 piling platform - temporary piles 1 to 4																							
1011-1570.20	F7 piling platform - erect steel platform modules 1 & 2	9	23-Nov-11	03-Dec-11	F7 piling platform - erect steel platform modules 1 & 2																							
1011-1570.30	F7 piling platform - temporary piles 5 & 6	7	03-Dec-11	12-Dec-11	F7 piling platform - temporary piles 5 & 6																							
1011-1570.40	F7 piling platform - erect steel platform modules 3 & 4	7	12-Dec-11	20-Dec-11	F7 piling platform - erect steel platform modules 3 & 4																							
1011-1570.50	F7 piling platform - ICE	6	20-Dec-11	27-Dec-11	F7 piling platform - ICE																							
1011-1580.10	F8 piling platform - temporary piles 1 to 4	2	18-Oct-11 A	23-Nov-11	F8 piling platform - temporary piles 1 to 4																							
1011-1580.20	F8 piling platform - erect steel platform modules 1 & 2	9	23-Nov-11	03-Dec-11	F8 piling platform - erect steel platform modules 1 & 2																							
1011-1580.30	F8 piling platform - temporary piles 5 & 6	7	03-Dec-11	12-Dec-11	F8 piling platform - temporary piles 5 & 6																							
1011-1580.40	F8 piling platform - erect steel platform modules 3 & 4	7	12-Dec-11	20-Dec-11	F8 piling platform - erect steel platform modules 3 & 4																							
1011-1580.50	F8 piling platform - ICE	6	20-Dec-11	27-Dec-11	F8 piling platform - ICE																							
1011-1610	Erect marine piling platform pier F11	36	02-Jan-12	15-Feb-12	Erect marine piling platform pier F11																							
1011-1620	Erect marine piling platform pier F12	36	20-Dec-11	03-Feb-12	Erect marine piling platform pier F12																							
1011-1650	Pre-drill F5 raking dolphin piles (2 nos.)	10	16-Dec-11	28-Dec-11	Pre-drill F5 raking dolphin piles (2 nos.)																							
1011-1660	Pre-drill F6 raking dolphin piles (2 nos.)	10	28-Dec-11	09-Jan-12	Pre-drill F6 raking dolphin piles (2 nos.)																							
1011-1670	Pre-drill F7 raking dolphin piles (2 nos.)	10	09-Jan-12	20-Jan-12	Pre-drill F7 raking dolphin piles (2 nos.)																							
1011-1680	Pre-drill F8 raking dolphin piles (2 nos.)	10	20-Jan-12	04-Feb-12	Pre-drill F8 raking dolphin piles (2 nos.)																							
1011-1780.10	Pier F3 Marine Bore Pile - F3-8	12	29-Nov-11	06-Dec-11	Pier F3 Marine Bore Pile - F3-8																							
1011-1780.20	Pier F3 Marine Bore Pile - F3-4	12	07-Dec-11	20-Dec-11	Pier F3 Marine Bore Pile - F3-4																							
1011-1780.30	Pier F3 Marine Bore Pile - F3-7	12	21-Dec-11	03-Jan-12	Pier F3 Marine Bore Pile - F3-7																							
1011-1780.40	Pier F3 Marine Bore Pile - F3-3	12	04-Jan-12	17-Jan-12	Pier F3 Marine Bore Pile - F3-3																							
1011-1780.50	Pier F3 Marine Bore Pile - F3-6	12	18-Jan-12	03-Feb-12	Pier F3 Marine Bore Pile - F3-6																							
1011-1780.60	Pier F3 Marine Bore Pile - F3-2	12	04-Feb-12	17-Feb-12	Pier F3 Marine Bore Pile - F3-2																							
1011-1800	Pier F6 Marine Bored Pile (team 4)	48	22-Dec-11	20-Feb-12	Pier F6 Marine Bored Pile (team 4)																							
1011-1820	Pier F5 Marine Bored Pile (team 3)	48	16-Dec-11	14-Feb-12	Pier F5 Marine Bored Pile (team 3)																							
1011-1850.10	Pier F4 Marine Bore Pile - F4-3	10	14-Nov-11 A	01-Dec-11	Pier F4 Marine Bore Pile - F4-3																							
1011-1850.20	Pier F4 Marine Bore Pile - F4-6	12	02-Dec-11	15-Dec-11	Pier F4 Marine Bore Pile - F4-6																							

Remaining Level of Effort

 Actual Level of Effort

 Actual Work

 Remaining Work

 Critical Remaining Work

 Milestone

Contract HY/2009/19

Three Month Rolling Programme (21 NOV 2011 - 20 FEB 2012)

3MRP
 3MRP - Nov 2011 to Feb 2012
 Page 6 of 7

Activity ID	Activity Name	Rem Dur	Start	Finish	2011												2012						
					November				December				January				February						
					24	31	07	14	21	28	05	12	19	26	02	09	16	23	30	06	13		
1011-1860.30	Pier F4 Marine Bore Pile - F4-5	12	16-Dec-11	29-Dec-11																			
1011-1860.40	Pier F4 Marine Bore Pile - F4-2	12	30-Dec-11	12-Jan-12																			
1011-1860.50	Pier F4 Marine Bore Pile - F4-4	12	13-Jan-12	30-Jan-12																			
1011-1860.80	Pier F4 Marine Bore Pile - F4-1	12	31-Jan-12	10-Feb-12																			
1011-1910	Pier F7 Dolphin Pile (team 5)	72	20-Jan-12	20-Apr-12																			
Pier F01 to F02																							
1011-2540	Possession to Portion III	0	31-Dec-11*																				
1011-2550	Marine piling preparation works, portion III	6	31-Dec-11	06-Jan-12																			
1011-2580	Erect Pre-drilling Platform pier F2B	8	02-Jan-12	10-Jan-12																			
1011-2570	Erect Pre-drilling Platform pier F2A	8	11-Jan-12	19-Jan-12																			
1011-2580	Erect Pre-drilling Platform pier F1B	8	20-Jan-12	01-Feb-12																			
1011-2590	Erect Pre-drilling Platform pier F1A	8	02-Feb-12	10-Feb-12																			
1011-2600	Pre-drilling pier F2B	10	11-Jan-12	21-Jan-12																			
1011-2610	Pre-drilling pier F2A	20	20-Jan-12	15-Feb-12																			
1011-2620	Pre-drilling pier F1B	10	02-Feb-12	13-Feb-12																			
1011-2630	Pre-drilling pier F1A	20	11-Feb-12	05-Mar-12																			
1011-2640	Dismantle Pre-drilling Platform Pier F2B	5	26-Jan-12	31-Jan-12																			
10.1.2 - Land Pier Construction																							
Pier D08 to D11																							
1012-1010	Site Survey and Setting Out at Portion III	6	31-Dec-11	06-Jan-12																			
1012-1015	Pre-drilling for Piling (D08 to D12) at III (28 nos.) (4set)	27	07-Jan-12	10-Feb-12																			
1012-1020	Portion III Land Pile G.I. Prelim Report / Founding Level	6	11-Feb-12	17-Feb-12																			
1012-1030	Pier D08 Bored Piles (6 piles)	72	11-Feb-12	09-May-12																			
1012-1040	Pier D09 Bored Piles (6 piles)	72	11-Feb-12	09-May-12																			
1012-1050	Pier D10 Bored Piles (6 piles)	72	11-Feb-12	09-May-12																			
1012-1060	Pier D11 Bored Piles (6 piles)	72	11-Feb-12	09-May-12																			
Pier D05 to D07																							
1012-1250	Pre-drilling for 18 nos Piling at VIIIB (2set)	30	08-Aug-11 A	24-Dec-11																			
1012-1265	Portion VIIIB Land Pile G.I. Final Report / Founding Level	18	03-Oct-11 A	14-Jan-12																			
1012-1280.10	Pier D06 Bored Pile D06-1	0	08-Oct-11 A	29-Oct-11 A																			
1012-1280.20	Pier D06 Bored Pile D06-6	0	31-Oct-11 A	18-Nov-11 A																			
1012-1280.30	Pier D06 Bored Pile D06-5	17	19-Nov-11 A	09-Dec-11																			
1012-1280.40	Pier D06 Bored Pile D06-2	18	10-Dec-11	30-Dec-11																			
1012-1280.50	Pier D06 Bored Pile D06-4	18	31-Dec-11	20-Jan-12																			
1012-1280.60	Pier D06 Bored Pile D06-3	18	21-Jan-12	14-Feb-12																			
1012-1290.10	Pier D05 Bored Pile D05-2	9	10-Nov-11 A	30-Nov-11																			
1012-1290.20	Pier D05 Bored Pile D05-1	18	01-Dec-11	21-Dec-11																			
10.1.3 - E/B Bridge Construction																							
Bridge D3																							
1013-1000	Design & Procurement of Launching Girder	75	20-Jan-12	23-Apr-12																			
14 - SECTION 14 OF THE WORKS																							
14.1 - Soft Landscape																							
1410-1000	Transplant. of ex. Trees to Nursery & upkeep	1515	31-Dec-11	17-Jan-17																			

- Remaining Level of Effort
- Actual Level of Effort
- Actual Work
- Remaining Work
- Critical Remaining Work
- Milestone

Contract HY/2009/19

Three Month Rolling Programme (21 NOV 2011 - 20 FEB 2012)

3MRP

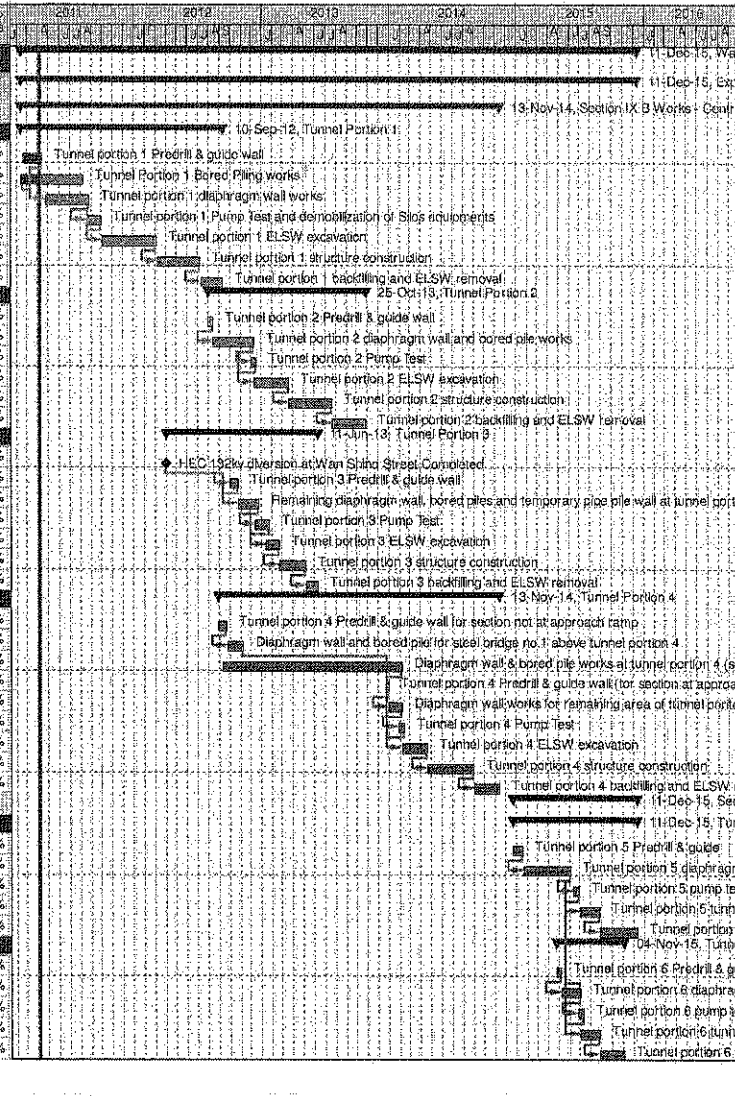
3MRP - Nov 2011 to Feb 2012

Page 7 of 7

Wan Chai Development Phase II - Central - Wan Chai
Bypass at Wan Chai East CONTRACT HK/2009/02

CHUN WO - CRGL JV

Activity ID	Activity Name	OD	Start	Finish	% Planned	2011	2012	2013	2014	2015	2016
Wan Chai Development Phase II - Central - Wan Chai Bypass at Wan Chai East											
Expanded and More Detailed Initial Works Programme											
Section IX B Works - Central - Wan Chai Bypass Tunnel Structure from chainage 3400 to eastern tunnel											
Tunnel Portion 1											
S9B-T1-0005	Tunnel portion 1 Predrill & guide wall	10	18-Feb-11	13-Apr-11	40%						
S9B-T1-0007	Tunnel Portion 1 Bored Piling works	105	09-Feb-11	08-Aug-11	0%						
S9B-T1-0010	Tunnel portion 1 diaphragm wall works	105	26-Apr-11	27-Aug-11	0%						
S9B-T1-0015	Tunnel portion 1 Pump Test and demobilization of Slos equipments	35	20-Aug-11	30-Sep-11	0%						
S9B-T1-0020	Tunnel portion 1 ELSW excavation	130	03-Oct-11	07-Mar-12	0%						
S9B-T1-0030	Tunnel portion 1 structure construction	100	09-Mar-12	09-Jul-12	0%						
S9B-T1-0040	Tunnel portion 1 backfilling and ELSW removal	54	10-Jul-12	10-Sep-12	0%						
Tunnel Portion 2											
S9B-T2-0105	Tunnel portion 2 Predrill & guide wall	10	02-Aug-12	13-Aug-12	0%						
S9B-T2-0010	Tunnel portion 2 diaphragm wall and bored pile works	100	14-Aug-12	10-Dec-12	0%						
S9B-T2-0015	Tunnel portion 2 Pump Test	14	03-Dec-12	18-Dec-12	0%						
S9B-T2-0020	Tunnel portion 2 ELSW excavation	80	11-Dec-12	19-Mar-13	0%						
S9B-T2-0030	Tunnel portion 2 structure construction	100	20-Mar-13	22-Jul-13	0%						
S9B-T2-0040	Tunnel portion 2 backfilling and ELSW removal	80	23-Jul-13	25-Oct-13	0%						
Tunnel Portion 3											
S9B-T3-0005	HEC 132kv diversion at Wan Shing Street Completed	0	01-Apr-12*		0%						
S9B-T3-0008	Tunnel portion 3 Predrill & guide wall	20	02-Oct-12	25-Oct-12	0%						
S9B-T3-0010	Remaining diaphragm wall, bored piles and temporary pipe pile wall at tunnel portion 3.	50	25-Oct-12	22-Dec-12	0%						
S9B-T3-0015	Tunnel portion 3 Pump Test	30	15-Dec-12	22-Jan-13	0%						
S9B-T3-0020	Tunnel portion 3 ELSW excavation	30	15-Jan-13	20-Feb-13	0%						
S9B-T3-0030	Tunnel portion 3 structure construction	80	21-Feb-13	08-May-13	0%						
S9B-T3-0040	Tunnel portion 3 backfilling and ELSW removal	30	07-May-13	11-Jun-13	0%						
Tunnel Portion 4											
S9B-T4-0005	Tunnel portion 4 Predrill & guide wall for section not at approach ramp	21	30-Aug-12	22-Sep-12	0%						
S9B-T4-0010	Diaphragm wall and bored pile for steel bridge no.1 above tunnel portion 4	40	24-Sep-12	10-Nov-12	0%						
S9B-T4-0020	Diaphragm wall & bored pile works at tunnel portion 4 (section not at approach ramp)	420	11-Sep-12	05-Feb-14	0%						
S9B-T4-0025	Tunnel portion 4 Predrill & guide wall (for section at approach ramp)	5	23-Dec-13	30-Dec-13	0%						
S9B-T4-0030	Diaphragm wall works for remaining area of tunnel portion 4 (for section at approach ramp)	30	31-Dec-13	06-Feb-14	0%						
S9B-T4-0035	Tunnel portion 4 Pump Test	14	28-Jan-14	14-Feb-14	0%						
S9B-T4-0040	Tunnel portion 4 ELSW excavation	60	07-Feb-14	19-Apr-14	0%						
S9B-T4-0050	Tunnel portion 4 structure construction	110	22-Apr-14	01-Sep-14	0%						
S9B-T4-0060	Tunnel portion 4 backfilling and ELSW removal	60	02-Sep-14	13-Nov-14	0%						
Section X Works - Central - Wan Chai Bypass Tunnel Structure from western tunnel to chainage 3400											
Tunnel Portion 5											
S10-T5-0005	Tunnel portion 5 Predrill & guide	21	23-Dec-14	19-Jan-15	0%						
S10-T5-0010	Tunnel portion 5 diaphragm wall & bored pile works	110	20-Jan-15	04-Jun-15	0%						
S10-T5-0015	Tunnel portion 5 pump test	14	13-Jun-15	30-Jun-15	0%						
S10-T5-0020	Tunnel portion 5 tunnel ELSW excavation	45	04-Jul-15	25-Aug-15	0%						
S10-T5-0030	Tunnel portion 5 tunnel structure construction	90	26-Aug-15	11-Dec-15	0%						
Tunnel Portion 6											
S10-T6-0040	Tunnel portion 6 Predrill & guide	12	24-Apr-15	08-May-15	0%						
S10-T6-0050	Tunnel portion 6 diaphragm wall & bored pile works at Area 10	45	09-May-15	09-Jul-15	0%						
S10-T6-0055	Tunnel portion 6 pump test	14	25-Jun-15	11-Jul-15	0%						
S10-T6-0060	Tunnel portion 6 tunnel ELSW excavation at Area 10	45	04-Jul-15	26-Aug-15	0%						
S10-T6-0070	Tunnel portion 6 tunnel structure construction at Area 10	58	26-Aug-15	04-Nov-15	0%						



Wan Chai Development Phase II - Central Wan Chai Bypass at Wan Chai East (Contract 2)
 CEDD CONTRACT NO. HK/2009/02
 Revised Programme dated 7 April 2011

Date	Revision	Checked	Approved
07-Apr-11		KT	KY

Page 10 of 11